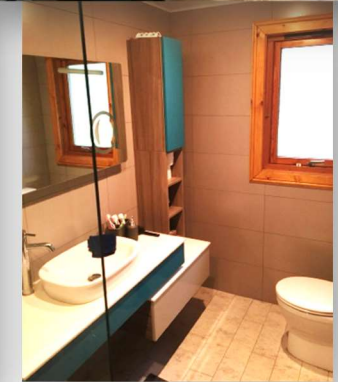


# Helpful hints for an easy, pleasant

Welcome Pack to 13 The

A very warm welcome to  
your gorgeous log cabin  
in Marlow



## OPEN PLAN LIVING:

We would be very grateful if you would take off your shoes as there is grass just outside and superb wooden floors inside.

**FRONT DOOR** - There are two locks on the front door. You only have one key, for the bottom lock. Please just use the lower lock.

**WIFI** – Fast Plusnet SSID and Password can be found on the back of the router which is in the hallway.

**TV** – 50” TV with Freesat extensive station list as well as a DVD player.

**DINING & COFFEE TABLES** - As these are easily marked, please use coasters and place mats to protect the surface.

**LOG BURNER** - Please only attempt to use the log burner if you are experienced with this....as this is a wooden log cabin!!! If you are experienced, then please let us know and we will email you the instructions for it. We would be grateful if you would replace any logs that you use.

**WINDOWS** – We do not use the security screw locks on the windows. They are all loose and released. If they do appear locked, simply undo with your fingers, or, if that fails, there is a key in the drawer under the crockery cupboard in the kitchen. Just open the lever in the middle to push the window open. You can release the hinges to allow a full opening of the windows, Scandi-style. Please be very careful when opening and closing the larger windows like this.

**VERANDA** – The veranda door is a simple thumb lock. Just remove the pin lock from the bottom bolt during your stay and put it in the kitchen drawer.

**WASHING** - If you would like to air any washing after washing and/or drying, please put it on the on the veranda below the balustrade so that is hidden from view.

## KITCHEN

**SINK** - It is bore hole water supplied from the Estate which we happily drink without filtering.

**INDUCTION HOB** - Turn on the power using the red switch on the wall by the coffee machine. To turn on the hob, press the left button and hold until it beeps. Then when it has come on, press the icon for the position you wish to cook with. Now press +/- to set. The hob will turn off automatically if there is no pan in place. Operating instructions are in the drawer below the crockery cupboard in the kitchen.

**OVEN** - Turn on the power using the red switch on the wall by the coffee machine. You must set the time to be a valid (not necessarily the correct) time, ie not 00:00, for the grill and oven to work. This is a strange Neff thing... Operating instructions are in the drawer in the kitchen.

**DISHWASHER** - Please use the quick cycle as it uses less water from the bore hole. Operating instructions are in the drawer in the kitchen.

**NESPRESSO MACHINE, FILTER COFFEE MACHINE, MICROWAVE, ETC** - Operating instructions are in the drawer below the crockery cupboard in the kitchen.

**WASHER & DRYER** – Operating instructions are in the drawer below the crockery cupboard in the kitchen.

### **RUBBISH**

You will see the green rubbish bin for all rubbish which is hidden in the laurel hedge just a little further along the road you come in on. All rubbish is recycled at the depot so there are no separate recycling bins.

**STORAGE RADIATORS** - These run off the regular tariff and for the summer have been set at 20degC. To turn on, ensure the radiator is plugged in to the wall socket and switched on. Turn the knob from 'O' to 'I' to switch the radiator on. To change the temperature, press the sun button with the red light so that 'Sol' appears on the display and then use the +/- to adjust the temperature. Press the sun button again to set.

### **FIRE SAFETY**

**PLEASE NEVER COVER THE RADIATORS EVEN WHEN SWITCHED OFF**





## HALL

**HALL SEAT** - Great place to put keys, phones, etc. Wifi router instructions, should they be needed, are in the drawer in the seat.

**WIFI ROUTER** – If the light is blue, everything is working. If it is absent, or red, you have a problem.

**IMMERSION HEATER** - This is in a cupboard in the hallway. The hot water is pressurised system and is on 24/7 providing plenty of hot water throughout the day. To switch on, if ever turned off, press the unmarked switch to 'On'. Please don't turn on the switch marked 'T'.

**STOP COCK** - In the cupboard by the front door you will find the washer and dryer and the fuse-boxes. You will also find the Stop Cock tap on the back right hand side of this cupboard behind the drying machine. This will turn off all the water to the log cabin.

**HALL CUPBOARD BY THE DOOR** – In here you will find the two fuse boxes that can be opened in the manner shown in the photos.

**MAIN BEDROOM** – Wardrobes and drawers are all empty and ready for your use.

**SECOND BEDROOM.** The loft-style double bed is accessible via the ladder. Be careful! The double bed on the floor is easier to access... If you require additional bedding, you will find it in the drawers of the bed in the main bedroom.

**VISITORS** – If you have any visitors please ask them to only park in one of the spaces allocated to the Log Cabin or a parking space where they see a V for Visitor. This is really important for good neighbourly relations! If they cannot find any Visitor Parking then please ask them to park in the golf course car park which is only a short walk away.



## LOCAL AMENITIES

**HARLEYFORD GOLF CLUB** – Here you will also find a bar and restaurant.

**LEISURELY WALK INTO MARLOW**. You can enjoy a beautiful walk through the estate and along the River Thames into Marlow. It is about 2.5 miles and takes between 45 mins and an hour.

## AT THE END OF YOUR HOLIDAY....CHECK OUT...

We hope you have a wonderful stay with us. It would be helpful if you could consider the following at the end of your stay:

- If you could please strip the beds and put the dirty linen in a pile so that we know what needs to be washed, that would be superb.
- If there are any damp things to wash like towels, please leave them hanging up in the bathroom.
- Please dispose of all your rubbish into the communal green dustbin.
- Please place any last-minute crockery or cutlery into the dishwasher.
- Please ensure the fridge door is closed.
- Please ensure all the windows are closed and locked.
- Please lock all doors, leave one key in the cabin in the cutlery drawer and leave the key in the key safe.

**We hope you have a fabulous stay in your gorgeous log cabin!**

